
DataFax 4.2.0

Wayne Taylor
Clinical DataFax Systems Inc.



RECENT HISTORY

Version	Release	
3.7.004	2005-06	X-Windows
3.8	2006-08	QT iDataFax intro
3.9	2009-04	QT for all client tools
4.0	2009-12	transition complete
4.1	2010-12	many enhancements
4.2	2011-09	unicode, DFsend, ...
5.0	2013-??	Postgres database

UNICODE

- previously DF allowed ASCII only
 - English for all text in study setup and data entry
- 4.2 adds support for 2 byte characters
 - used in many languages
- 4.2 setup supports UNICODE in:
 - all labels and messages displayed in iDataFax
- 4.2 database supports UNICODE in:
 - text fields in data records
 - text in queries and query replies
 - text in reasons

iDataFax Chinese Interface

The screenshot displays the iDataFax software interface in Chinese. The main window is titled "住院报告表 Hospitalization Form". The form contains the following information:

- 个人编码 (Patient Number): 01006
- 访问期 (Week): 1 (selected)
- 1. 医院信息 (Hospital):
 - 1a. 医院名称 (Name): 北京协和医院 Peking Union Medical College Hosp
 - 1b. 医院地址 (Address): 北京市西城区大木仓胡同41号
- 1c. 患者住院号 (Patient AD): 123456
- 2. 患者信息 (Patient):
 - 2a. 住院日期 (Admission Date): 2011-09-01
 - 2b. 出院日期 (Discharge Date): 2011-09-07
- 3. 住院信息 (Hospitalization):
 - 3a. 是否为急诊住院? (Emergency): 是 (Yes)
 - 3b. 是否因临床试验而住院? (Clinical Trial): 否 (No)
 - 3c. 症状和体征 (Symptoms and Signs): 醒来左侧肢体乏力 Awoke with weakness on left side
 - 3d. 诊断 (Diagnosis): 中风 Stroke
 - 3e. 治疗 (Treatment): 颈动脉内膜切除术 Carotid endarterectomy

The interface also shows a sidebar with a tree view of study components and a bottom status bar indicating the last save time: 2011/5/10 02:10:07.

Site Limit

- Increased to 21,460 sites per study
- New QC Report header for studies created using DF 4.2

Demo 252 Quality Control Report

00004 120228 0000411356

Site # Creation yymmdd Please Sign and Date DataFax Control #

QC REPORT # 004-120228-01 Created Feb 28, 2012 at 02:13:59 PM

- Plate 501:
 - Field 7: DataFax Control#
 - Field 8: Site#
 - Field 9: Report creation date

Other Updates for UNICODE

- Standard Reports
 - text labels for visits, sites, field descriptions, etc.
 - new font selection option in Reports View
- QC report creation, transmission, printing
 - DF_QCupdate, DF_QCreports, DF_QCprint, etc.
 - DFqcps
 - DFtextps
- DFexport.rpc
 - modified the string splitting option for UNICODE

More Updates for UNICODE

- **DFsqlloader**
 - allows UNICODE in text data fields
 - also updated Oracle libraries to version 10g
- **DFcertreq & DFserveradmin**
 - support for UNICODE in certificates
- **DFprintdb**
 - support for UNICODE in text data fields
- **DFpdf**
 - support for UNICODE in visit & plate labels

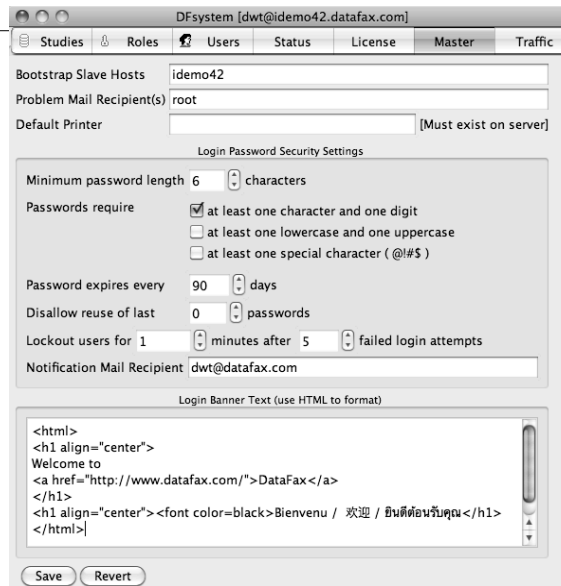
DFsystem

- **Support for UNICODE in:**
 - study names
 - study messages when disabled / restricted
- **But not in:**
 - user login names and passwords

Custom Login Banners



DFsystem - Master



Enhanced Security

DFedcservice manages all internet transmissions between DF apps and a DF server using SSL encryption

- DF 3.8 to 4.1
 - SSL v1-3 and any OpenSSL encryption
- DF 4.2
 - SSL v3 and 128 bit encryption

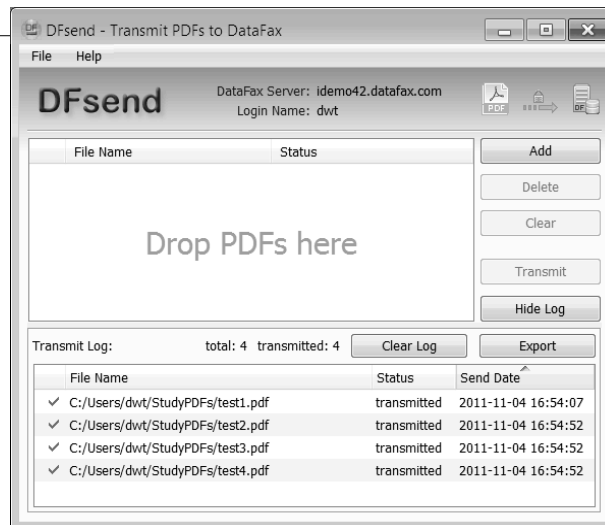
iDataFax 4.2

- List View - Metadata
 - now includes a 'Lost Records' table
- List View - DFsas
 - added Queries and Reasons to plate selection dialog
- Data View – File:Transmit PDF
 - now allows transmission of 2+ PDF at a time
- Performance – Opening a patient binder
 - iDataFax optimization for large visit and page maps
 - server optimization for large databases

DFsend

- A very simple internet app
- An alternative to faxing
- A site scans CRFs to PDFs, then uses DFsend to transmit the PDFs to DataFax over the internet
- No need to setup and manage a fax modem pool or fax service, or setup local numbers for sites in other countries
- No telephone bills

DFsend



DFsend Benefits

- **authentication (user login)**
 - unauthorized users cannot submit PDFs
- **encryption (SSL v3 128 bit)**
 - protection of confidential patient data
- **feedback (immediate confirmation)**
 - user knows whether the transmission was successful
- **local tracking (DFsend log)**
 - a reminder of what has already be sent
- **central tracking (iDataFax page context)**
 - identifies each page by user name, date and time

www.datafax.com

- **New and improved?**
- **Client Support**
 - register, edit your profile, reset password
 - new support request form
 - new tips from the DataFax support group
 - see Software-Release Notes for new features
- **Help us by:**
 - linking to www.datafax.com
 - suggesting News of interest to the DFUG community
 - sending us study citations for 'DataFax in Action'
 - referring colleagues to www.datafax.com